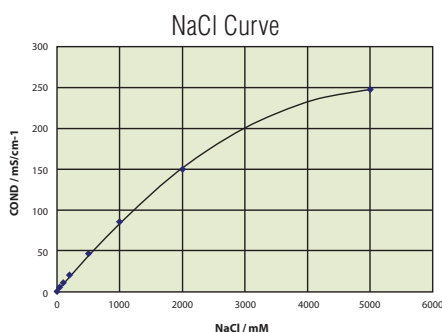
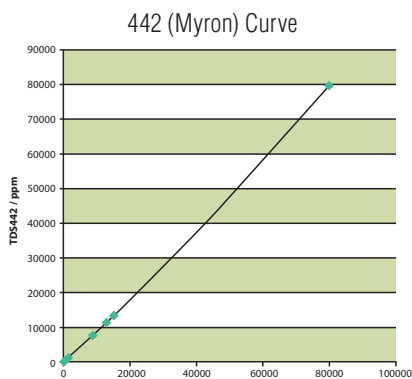
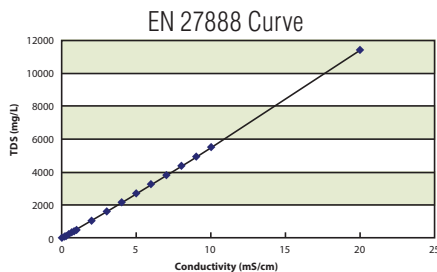


- Wide measurement range
- EC/TDS/Res/Sal in one meter
- Auto-calibration
- Multi-calibration points
- Preset TDS calibration curves
- Preset Salinity calibration curves
- Rugged conductivity cell construction

### TDS Calibration Curves

Application	Key chemical species	TDS selection
Aquaculture, pickling	NaCl	NaCl
Boiler water, HVAC	Na <sub>2</sub> SO <sub>4</sub> , NaHCO <sub>3</sub> , NaCl	442 (Myron)
Environmental	EN standard for environmental water	EN 27888
General application	Not known	KCl (linear factor) Default: 0.5 Selectable: 0.4 to 1.0



### Conductivity Meter



Model		EC 1100
		EC/TDS/Res/Sal/Temp (°C)
EC range		0.000 to 1.999 μS/cm (k = 0.1) 2.00 to 19.99 μS/cm (k = 0.1, 1) 20.0 to 199.9 μS/cm (k = 0.1, 1, 10) 200 to 1999 μS/cm (k = 0.1, 1, 10) 2.00 to 19.99 mS/cm (k = 0.1, 1, 10) 20.0 to 199.9 mS/cm (k = 1, 10) 0.200 to 2.000 S/cm (k = 10)
Resolution		0.05% F.S.
Accuracy		±0.6% F.S. (±1.5% F.S. > 18.0 mS/cm)
Ref. temp.		15 to 30 °C (selectable)
Temp. coefficient		0.00 to 10.00% (selectable)
Cell constants		0.1 / 1.0 / 10.0
Cal points		4 points (Auto/Manual)
Units setting		Auto ranging / Manual μS/cm or mS/cm or S/m
TDS range		0.01 to 9.99 mg/L 10.0 to 99.9 mg/L 100 to 999 mg/L 1.00 to 9.99 g/L 10.0 to 99.9 g/L 100 g/L
Resolution		0.01 mg/L
Accuracy		±0.1% F.S.
TDS curves		EN27888, 442, Linear (0.40 to 1.00), NaCl
Resistivity Range		0.000 to 1.999 kΩ•cm (k = 1) 2.00 to 19.99 kΩ•cm (k = 0.1, 1) 20.0 to 199.9 kΩ•cm (k = 0.1, 1) 0.200 to 1.999 MΩ•cm (k = 0.1, 1) 2.00 to 19.99 MΩ•cm (k = 0.1, 1) 20.0 to 200.0 MΩ•cm (k = 0.1)
Resolution		0.05% F.S.
Accuracy		±0.6% F.S. (±1.5% F.S. > 1.80 MΩ•cm)
Salinity		0.00 to 100.00 ppt 0.000 to 10.000 %
Resolution		0.01 ppt / 0.001%
Accuracy		±0.2% F.S.
Cal curves		NaCl / Sea water
Temperature range		-30.0 °C to 130 °C
Resolution		0.1 °C
Accuracy		±0.4 °C
Memory		500
Auto-Hold/Stability		Yes
Diagnostic messages		Yes
Display		Custom LCD
Inputs		BNC, phono, DC sockets
Outputs**		USB, RS232C
Power requirements		AC adaptor 100 ~ 240 V, 50/60 Hz
Electrode stand		Integrated
Weight		500g
Dimensions		170 (L) x 174 (D) x 73 (H) mm

### Ordering information:

Kit	<ul style="list-style-type: none"> <li>• EC1100 meter</li> <li>• electrode stand</li> <li>• power adaptor</li> <li>• 84uS/cm, 1413 uS/cm, 12.88 mS/cm, 111.8 mS/cm solutions (250ml ea)</li> <li>• 9382-10D - plastic-body, k=1.0 conductivity cell with integrated temperature sensor, 1m cable, BNC &amp; phono jack</li> <li>• Data Acquisition Software</li> </ul>	<b>EC1100-S</b> (3999960179)
Meter with electrode stand	<ul style="list-style-type: none"> <li>• EC1100 meter</li> <li>• electrode stand</li> <li>• power adaptor</li> <li>• protection cover</li> </ul>	<b>EC1100</b> (3200647411)
Conductivity cell	<ul style="list-style-type: none"> <li>• plastic-body, k=1.0 conductivity cell with integrated temperature sensor, 1m cable, BNC &amp; phono jack</li> </ul>	<b>9382-10D</b> (3014046709)
Conductivity standard solutions set	<ul style="list-style-type: none"> <li>• 84uS/cm, 1413 uS/cm, 12.88 mS/cm, 111.8 mS/cm solutions (250ml ea)</li> </ul>	<b>503-S</b> (3999960017)

\*Kit with 501-S is available upon request. Add 'N' suffix to the order code when ordering. \*\* Communication cable sold separately.